

Flap Door System



Pacta Fall Flap Door System for Doors with Handles

- Compact hinge for fall flaps
- No additional stays or cables required
- Supplied in pairs, with an extra single unit available to supplement pairs for doors >900mm wide
- Decelerated opening action for gradual, controlled fall of door
- Door and base panel fully aligned in open position for flat, uniform surface
- Many applications in living rooms, kitchens
- Ideal for creating fold down desks in children's furniture or table extensions in hotels
- Standard drilling of door \varnothing 35mm
- 13mm deep cup
- 90° opening
- Fixed K = 4.5mm
- Adjustments:
 - Depth: -0.5mm to +2.8mm
 - Sideways: -1.5mm to +1.5mm
 - Height: -1.5mm to +1.5mm
- Separate Push to Open model also available (SAL555 and SAL556)



White



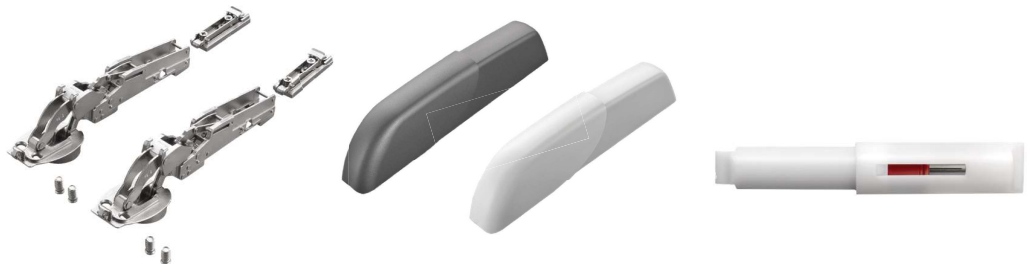
Satin Metal Black

Item Code	Description	Sales Unit
SAL551	Pacta Fall Flap Door System, Classic White	Pair
SAL552	Pacta Fall Flap Door System, Satin Metal Black	Pair
SAL553	Extra Central Hinge – Doors >900mm Wide, Classic White	Ea
SAL554	Extra Central Hinge – Doors >900mm Wide, Satin Metal Black	Ea

Kit Components for Pacta Flap Door System

Pair Kit Components:

- 2 hinges
- 2 mounting plates
- 2 covers
- Fixing screws
- Smove



Extra Central Hinge*

Components:

- 1 hinge
- 1 cover
- Fixing screws

*Recommended for doors 900mm+ wide



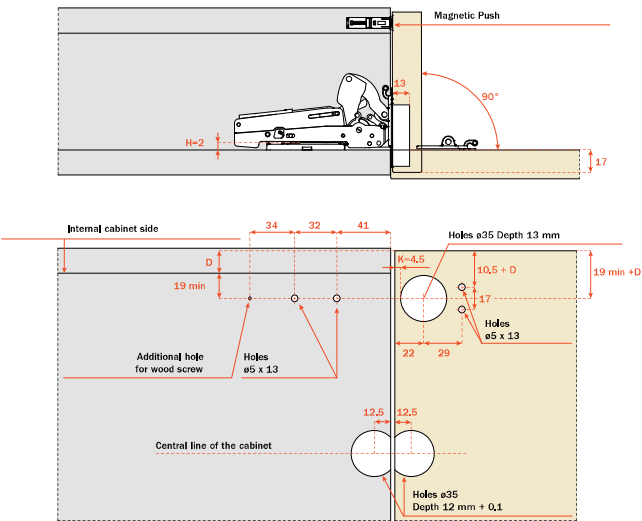
Satin Metal Black



Classic White

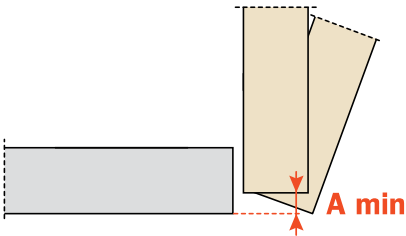
As an APPROXIMATE guide to calculating door weight, for 16mm board allow 11.84kg/m² and for 18mm board allow 13.32kg/m²

Drilling Patterns



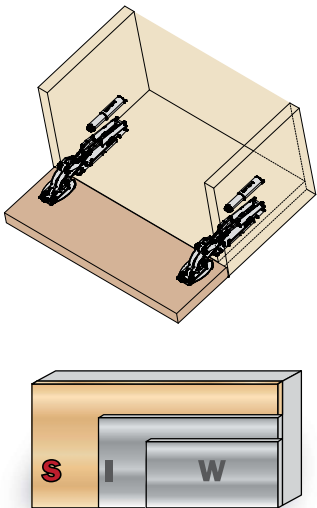
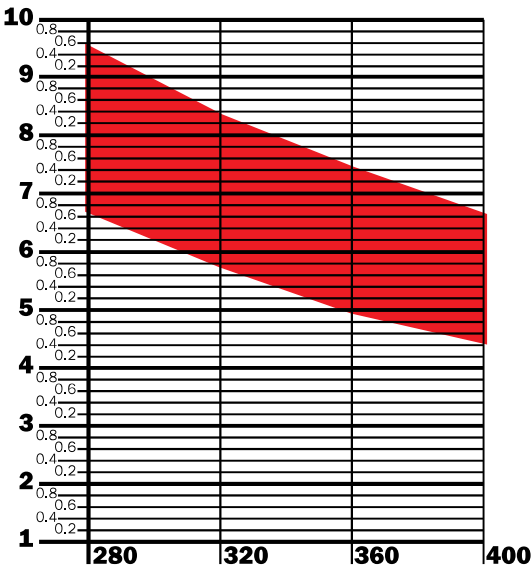
Centre hinge
required for doors
wider than 900mm

Space Needed to Open Door



	T =	16	17	18	19	20	21	22	23	24	25	26	27	28
K=4.5	A =	1.3	2.1	3	3.9	4.8	5.7	6.6	7.5	8.5	9.4	10.4	11.3	12.3

Heavy Weight Door



Flap Door System

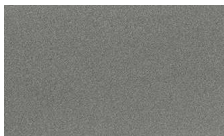


Pacta Push To Open Compatible Fall Flap Door System

- Compact hinge for fall flaps
- No additional stays or cables required
- Supplied in pairs, with an extra single unit available to supplement pairs for doors >900mm wide
- Decelerated opening action for gradual, controlled fall of door
- Door and base panel fully aligned in open position for flat, uniform surface
- Many applications in living rooms, kitchens
- Ideal for creating fold down desks in children's furniture or table extensions in hotels
- Standard drilling of door \varnothing 35mm
- 13mm deep cup
- 90° opening
- Fixed K = 4.5mm
- Adjustments:
 - Depth: -0.5mm to +2.8mm
 - Sideways: -1.5mm to +1.5mm
 - Height: -1.5mm to +1.5mm
- **Push To Open-compatible models require Salice Magnetic Push to Open System to operate, consisting of SAL267 release device plus applicable retaining catch (either SAL268 or SAL269) and potentially an optional holder (SAL270 or SAL271) – ref page 4.51**



White



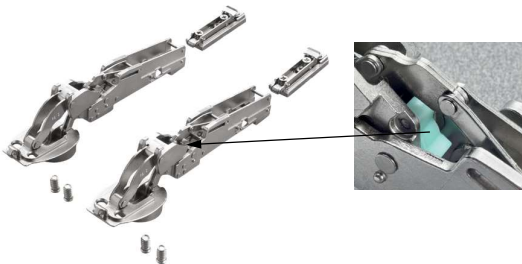
Satin Metal Black

Item Code	Description	Sales Unit
SAL555	Pacta Fall Flap Door System – Push to Open, Satin Metal Black	Pair
SAL556	Pacta Fall Flap Door System – Push to Open, White	Pair
SAL553	Extra Central Hinge – Doors >900mm Wide, Classic White	Ea
SAL554	Extra Central Hinge – Doors >900mm Wide, Satin Metal Black	Ea

Kit Components for Pacta Flap Door System

Pair Kit Components:

- 2 hinges
- 2 mounting plates
- 2 covers
- Fixing screws



Extra Central Hinge*

Components:

- 1 hinge
- 1 cover
- Fixing screws



Satin Metal Black

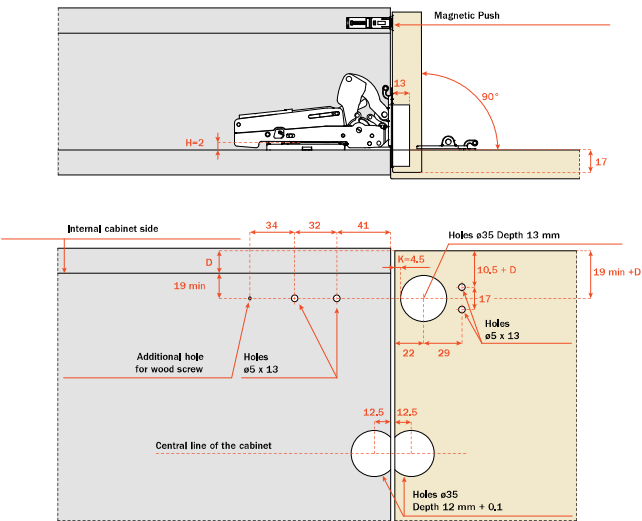


Classic White

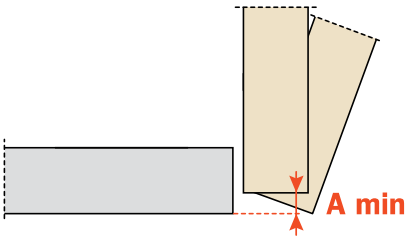
*Recommended for doors 900mm+ wide

As an APPROXIMATE guide to calculating door weight, for 16mm board allow 11.84kg/m² and for 18mm board allow 13.32kg/m²

Drilling Patterns

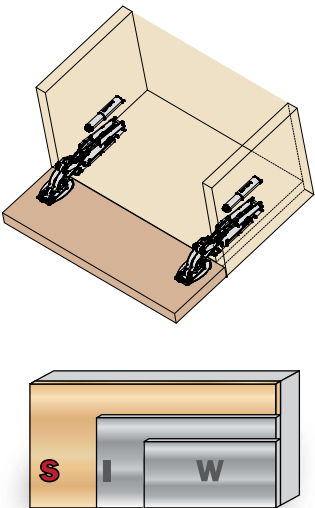
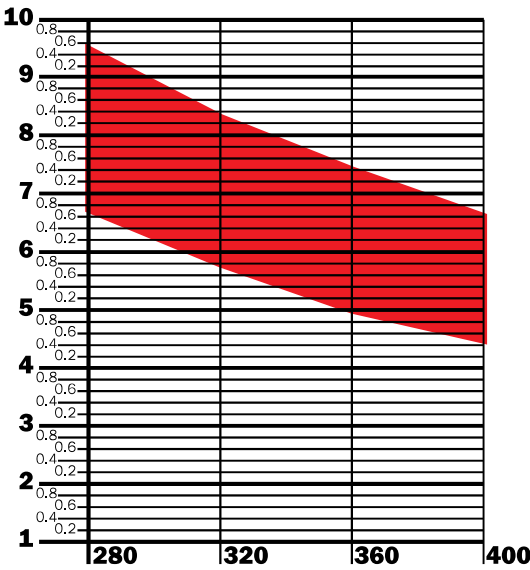


Space Needed to Open Door



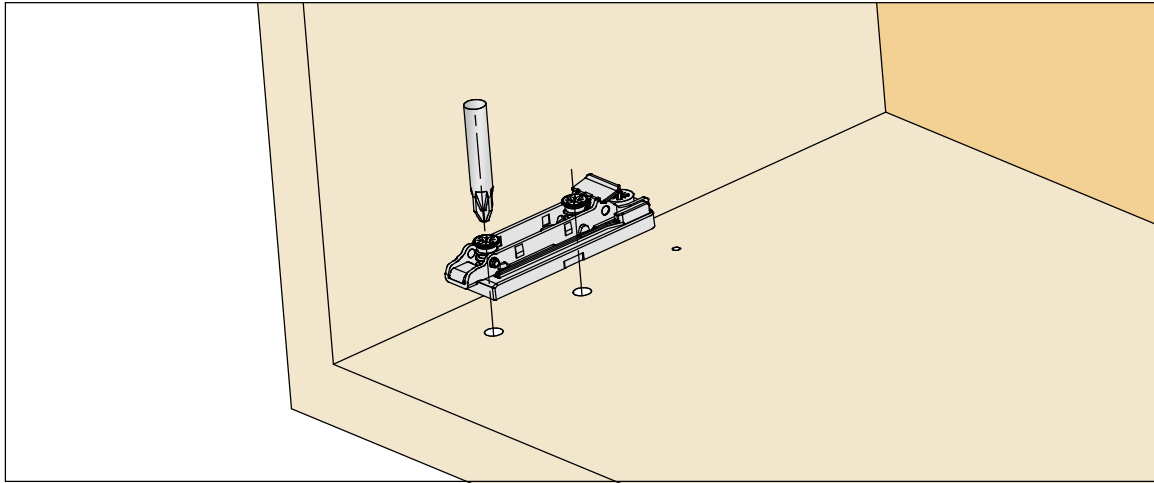
	T =	16	17	18	19	20	21	22	23	24	25	26	27	28
K=4.5	A =	1.3	2.1	3	3.9	4.8	5.7	6.6	7.5	8.5	9.4	10.4	11.3	12.3

Heavy Weight Door

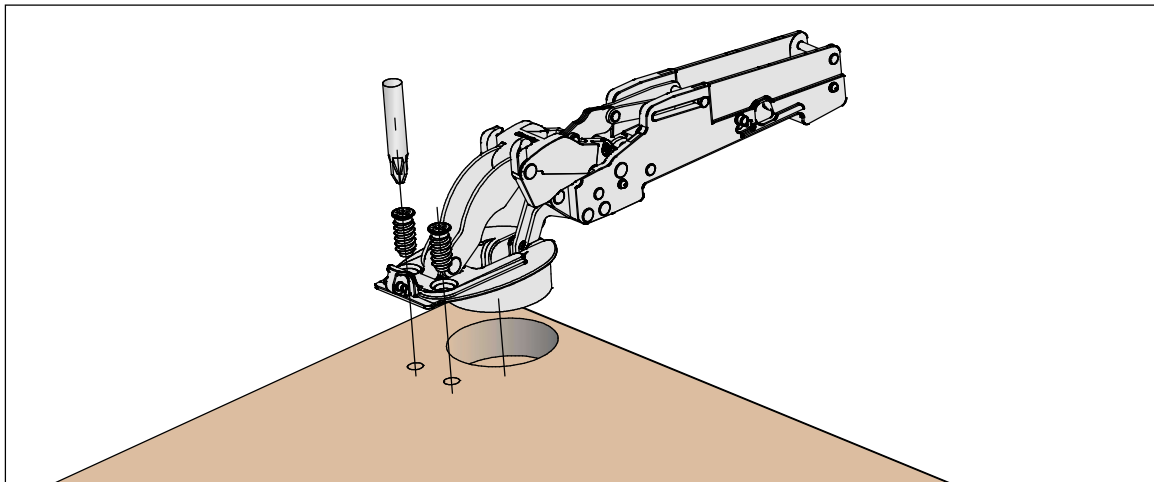


Pacta Fall Flap Door System Assembly Instructions

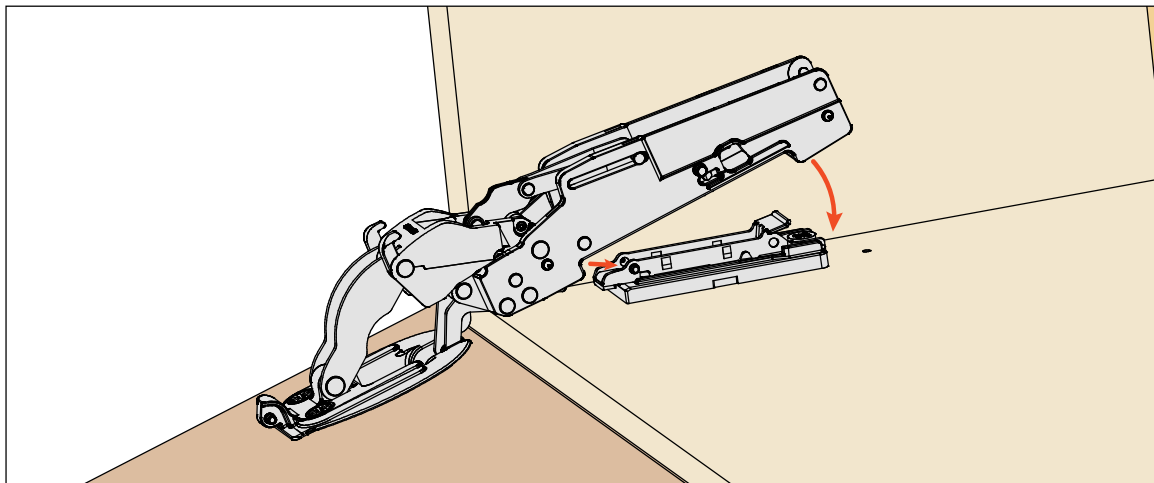
Fixing the mounting plate to the cabinet



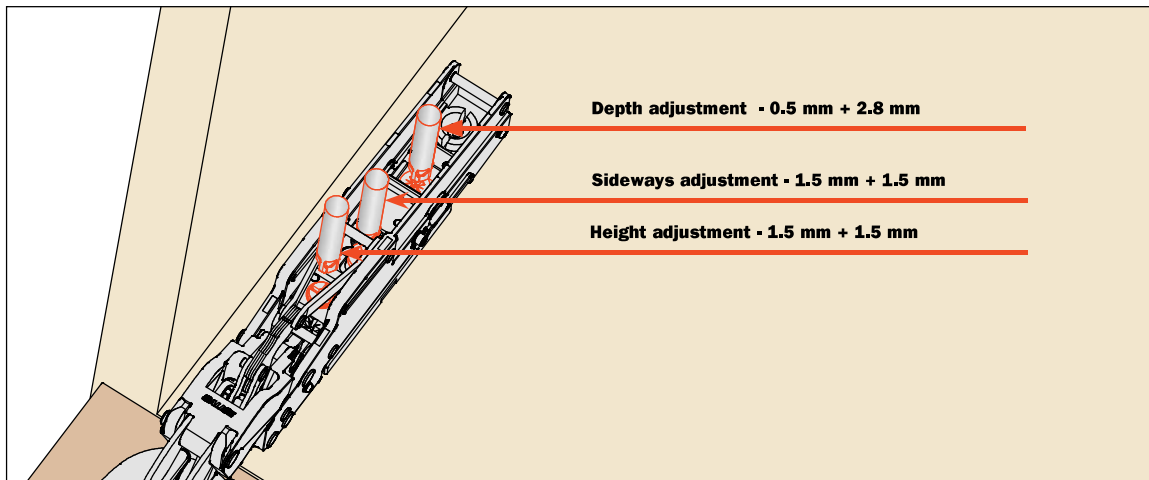
Fixing the hinge to the door



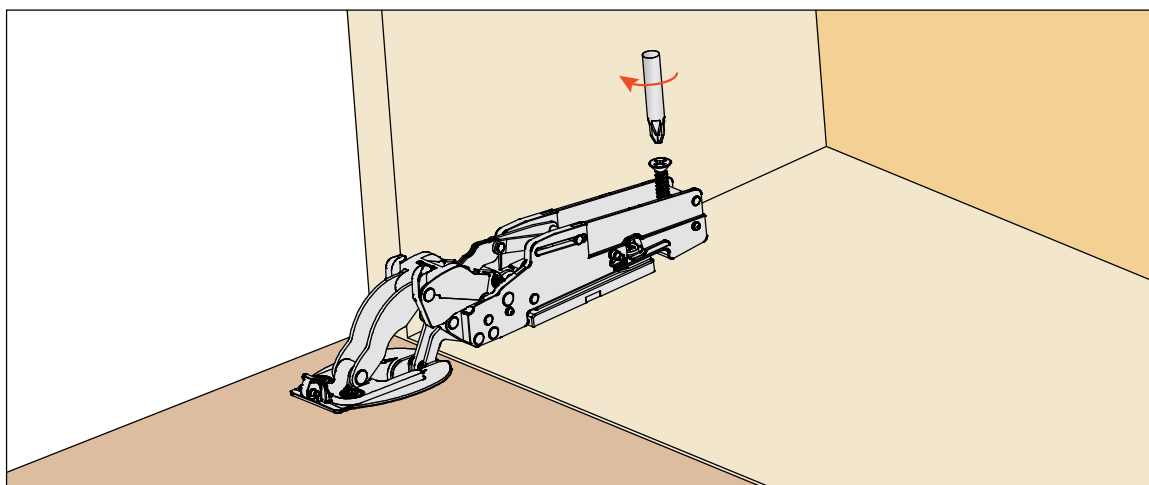
Mounting the door onto the cabinet Clip the hinge arm onto the mounting plates. This operation is tool free.



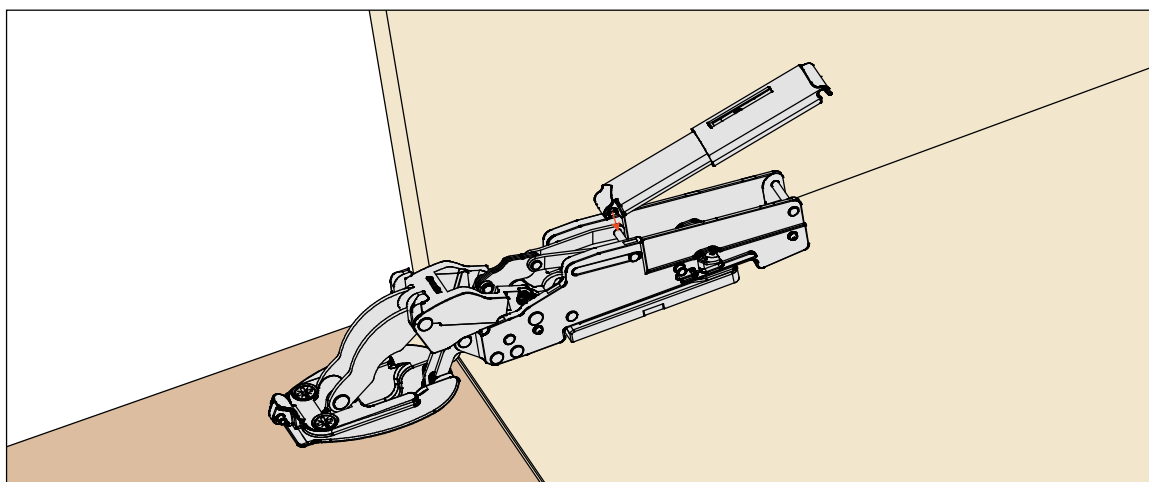
Adjustments



Fix the security screw

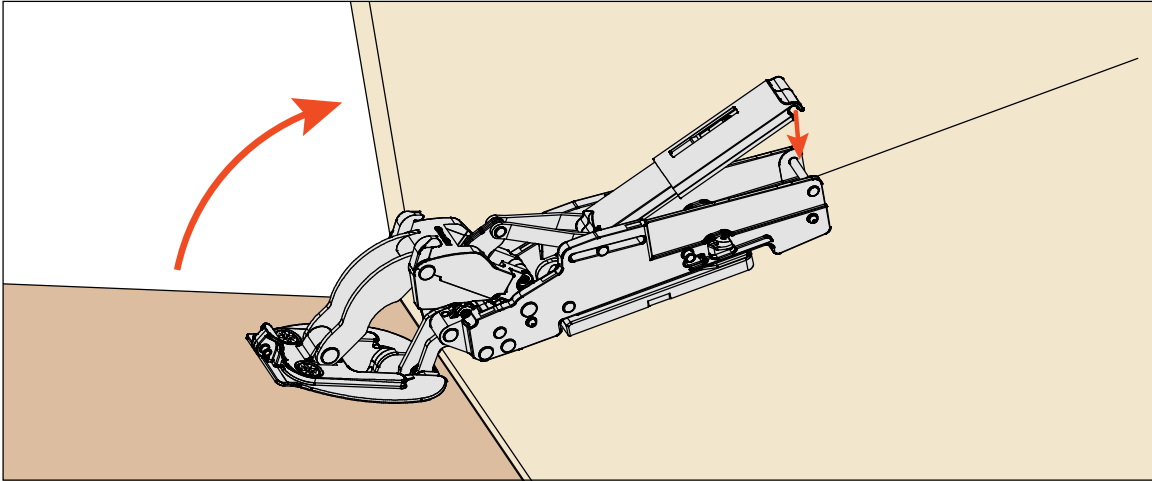


Installing the smove Clip the narrow end of the Smove into position. This operation is tool free.

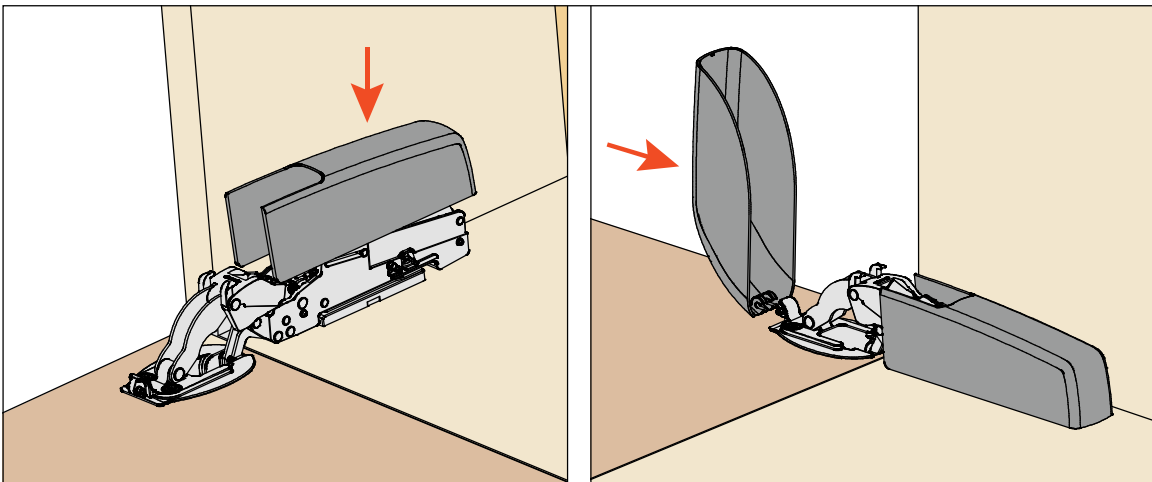


Pacta Fall Flap Door System Assembly Instructions

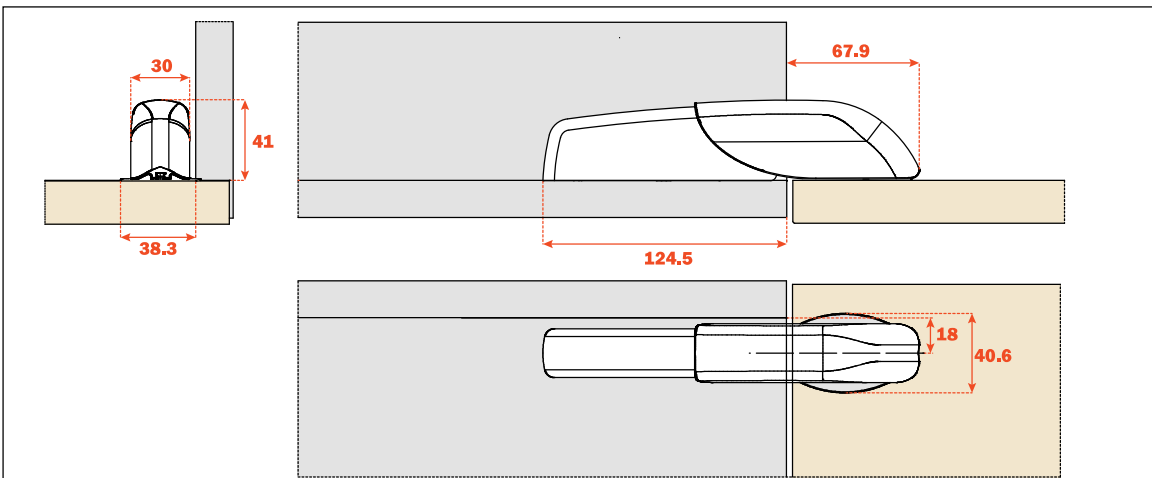
Installing the smove Lift the flap slightly and clip the other end of the Smove into position. This operation is tool free.



Installing the cover Firstly install the cover on the hinge arm and then to the cup.



Dimensions

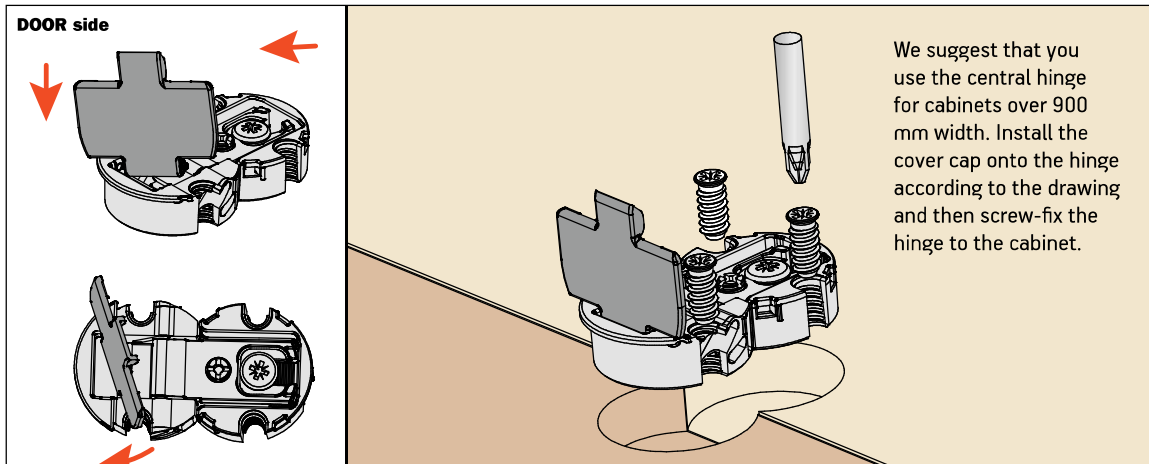


Pacta Fall Flap Door System

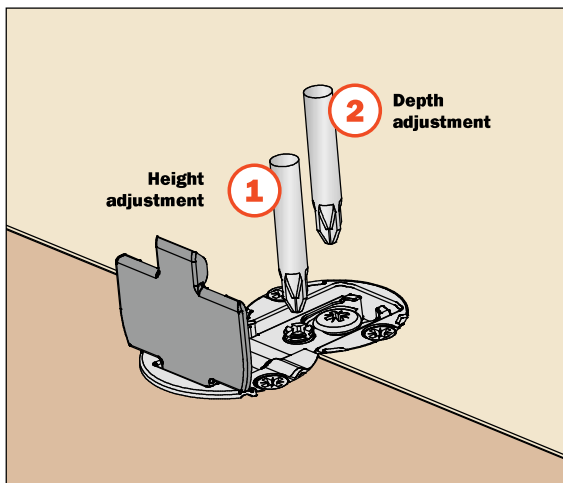
Assembly Instructions for Central Hinge

SALICE

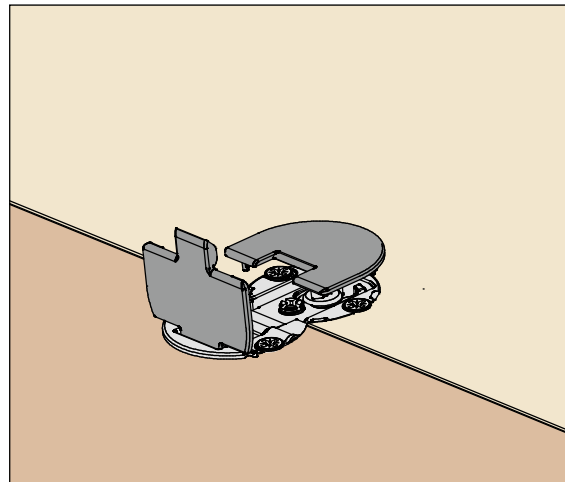
Application of the central hinge



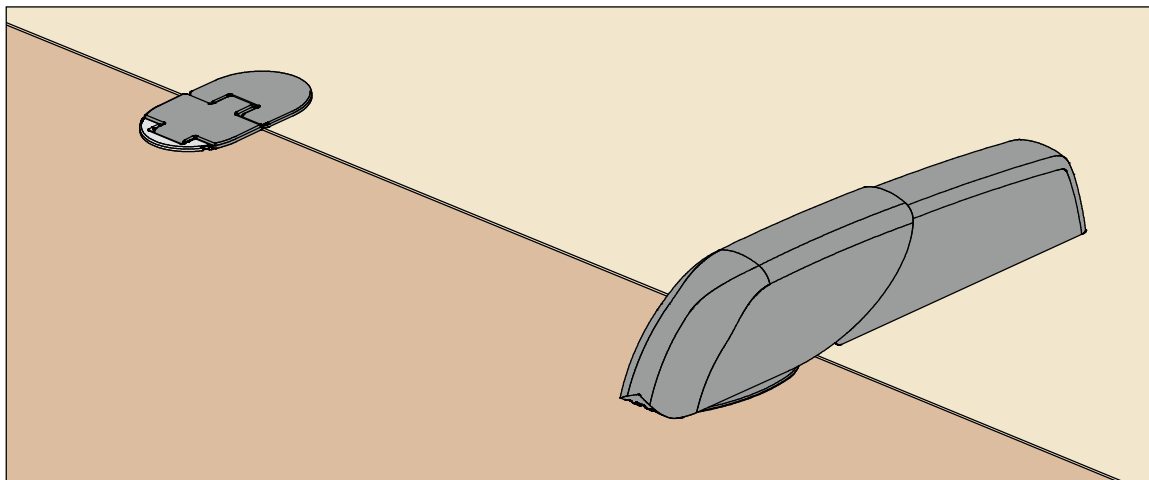
After fixing the hinge, make any adjustments required



Install the cover cap onto the hinge on the cabinet side



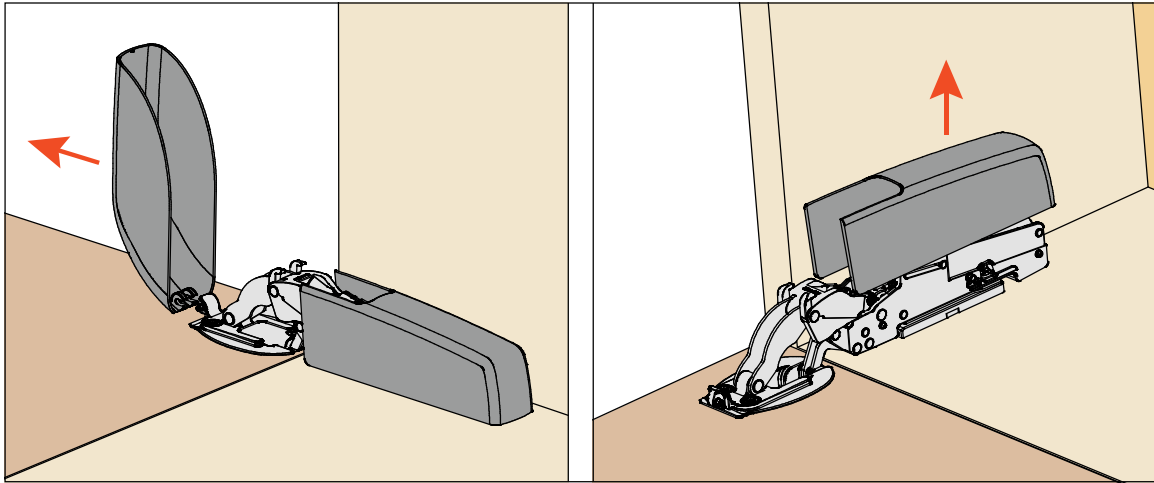
Overall view of the mounted system



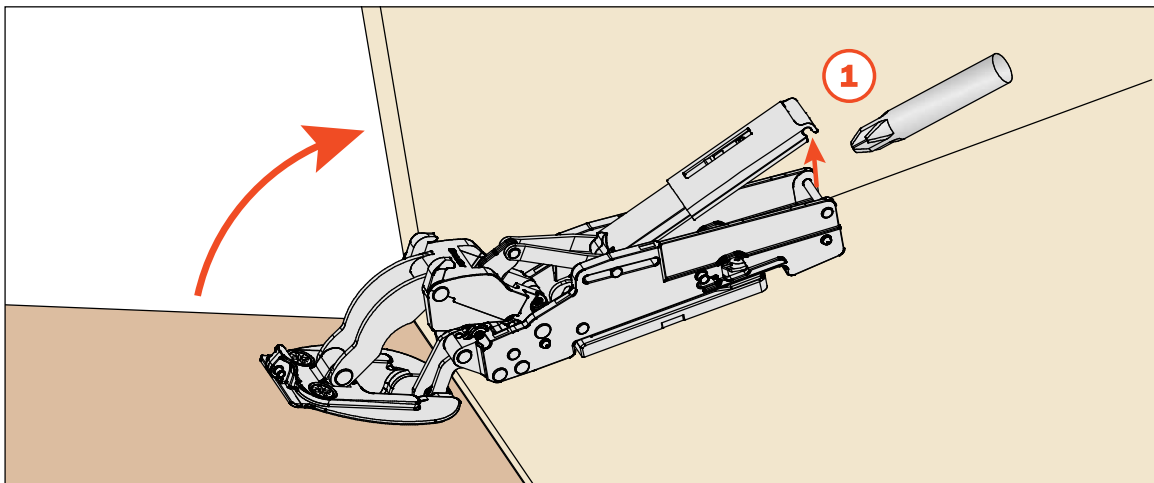
Pacta Fall Flap Door System

Disassembly Instructions

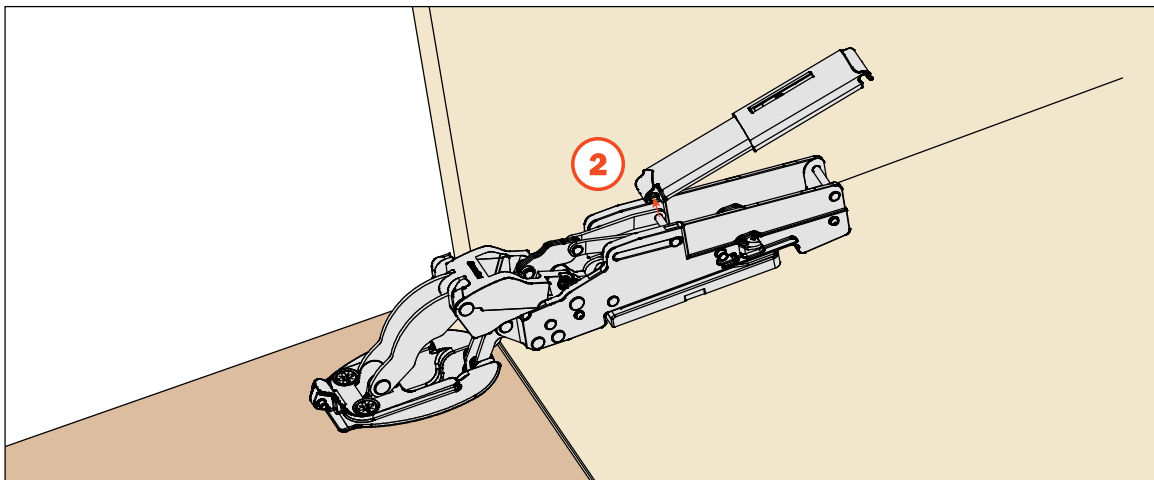
Removal of the cover



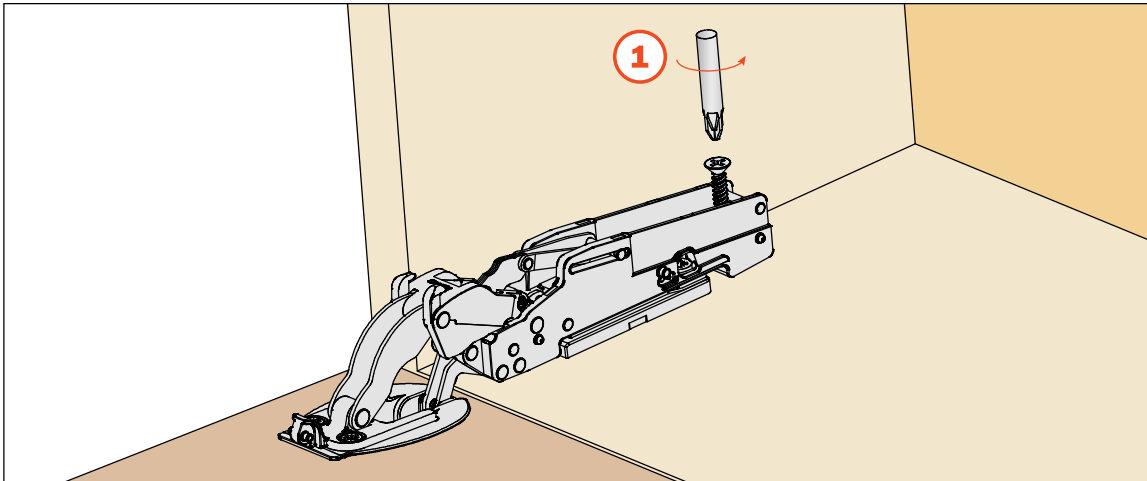
Disassembly of the Smove Lift the flap slightly and unclip the back of the Smove using a screwdriver.



Disassembly of the Smove Remove the other end of the Smove.



Remove the security screw



Unfasten the hinge from the mounting plate with a screwdriver

