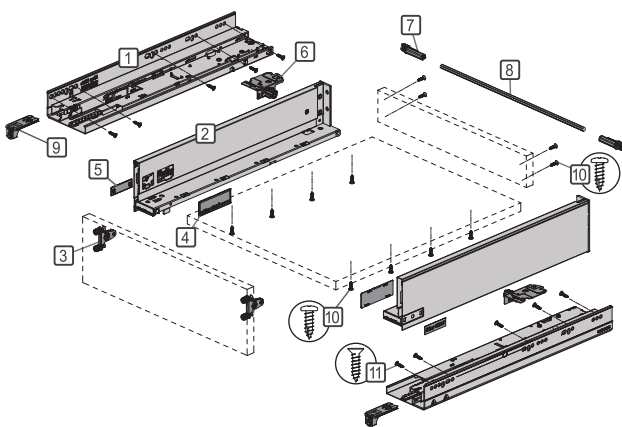


Components



- 1 Slide
- 2 Metal box
- 3 Front Fixing Bracket + Dowel + Screw
- 4 Cover cap (Inside)
- 5 Cover cap (outside)
- 6 Synchronization rod connector
- 7 Synchronization rod adapter
- 8 Synchronization rod
- 9 Front clip
- 10 Round head screw $\varnothing 4 \times 16$ - For Drawer Bottom & Drawer Back
- 11 Countersunk screw $\varnothing 4 \times 16$ or the System Screw $\varnothing 6 \times 10$ - For Slide

INSTRUCTIONS
APPLY TO SOFT CLOSE
& PUSH TO OPEN SOFT
CLOSE MODELS
EXCEPT STEPS 2, 10 AND 11
APPLY TO PUSH TO
OPEN SOFT CLOSE
MODELS ONLY

* Screw refer to the following illustration

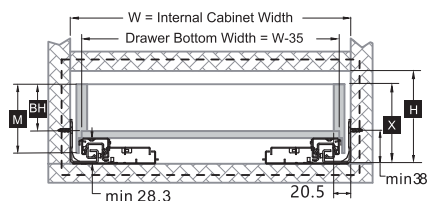
Drawer System Space Requirement

	Model	B	C	D	E
SIMLEAD Box	Model No.	MABA	MACA	MADA	MAEA
	M	97	138	185	249
SIMLEAD Metal Drawer System	X	109	150	197	261
	H	min114	min155	min203	min267
	BH	60	102	149	213

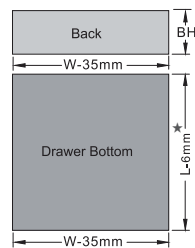
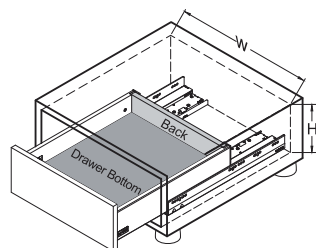
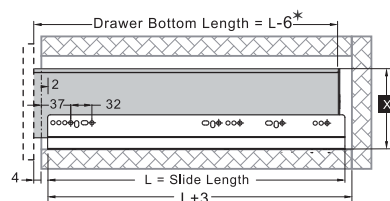
W=Internal Cabinet Width
L=Slide Length
X=Height of Slide + Drawer Side
H=Internal Cabinet Height
BH=Drawer Back Height
M=Drawer Side Height

* 16mm thickness is required for drawer bottom and back panels.

Front View



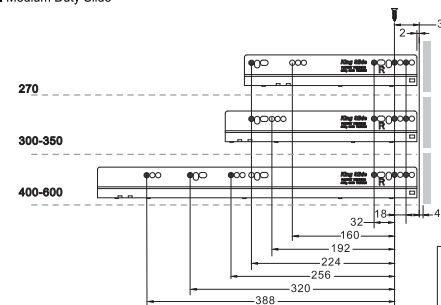
Side View



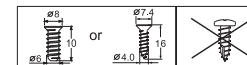
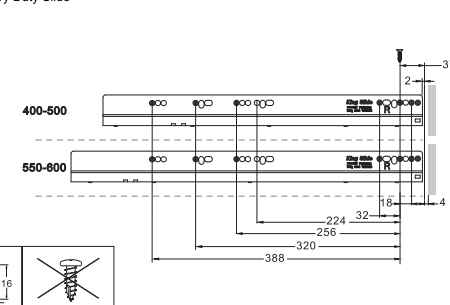
★ Allowances for drawer bottom length: +0/-2 mm

1 Slide Installation Instruction

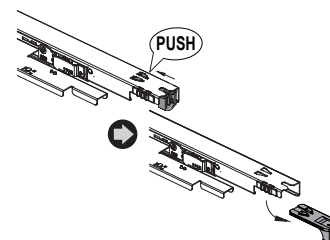
Medium Duty Slide



Heavy Duty Slide



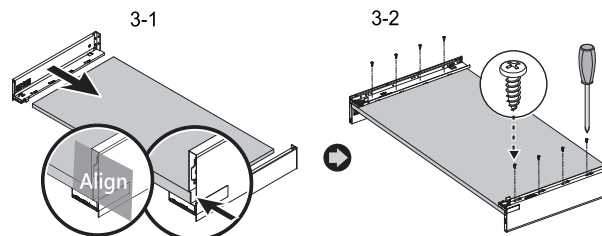
2 Front Clip to Prevent Slide Damage in Transit



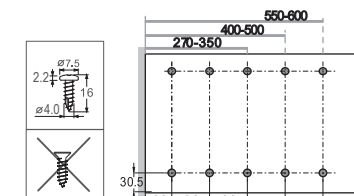
Remove the front clips on both sides after slide installation

Install front clips on slides to prevent transit damage.

3 Drawer Side and Bottom Assembly

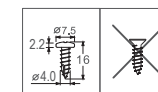
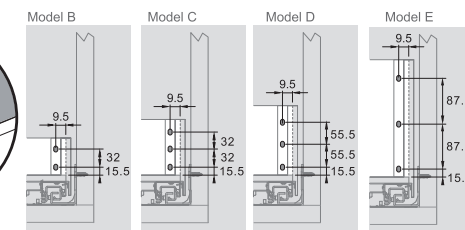
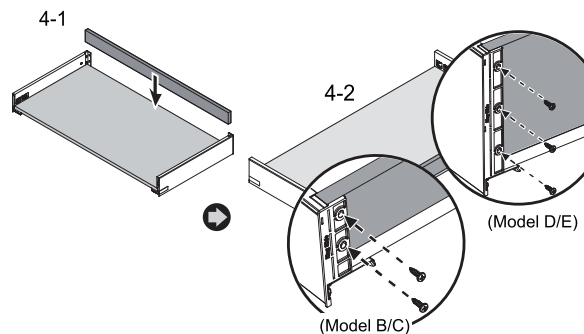


Drawer Bottom Screws Position

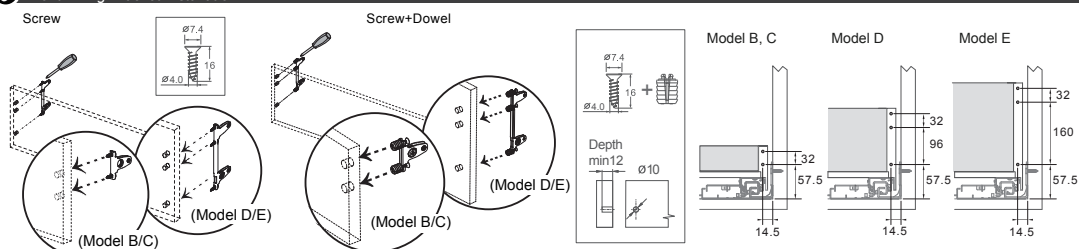
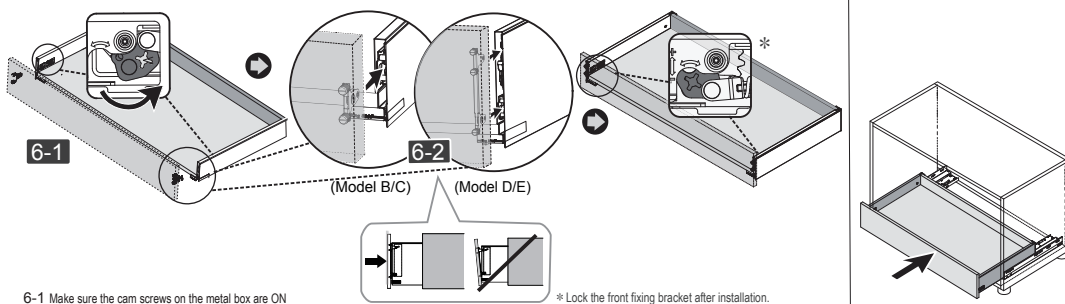
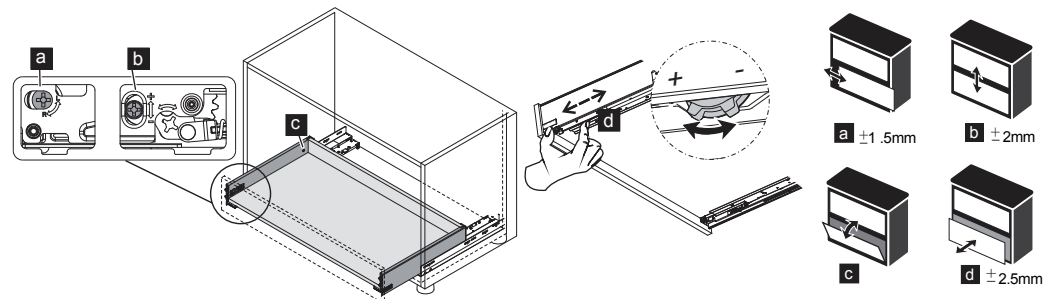
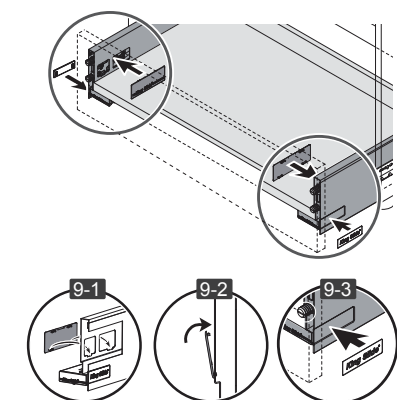
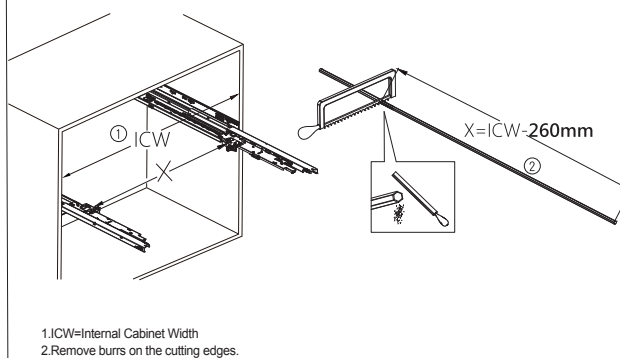
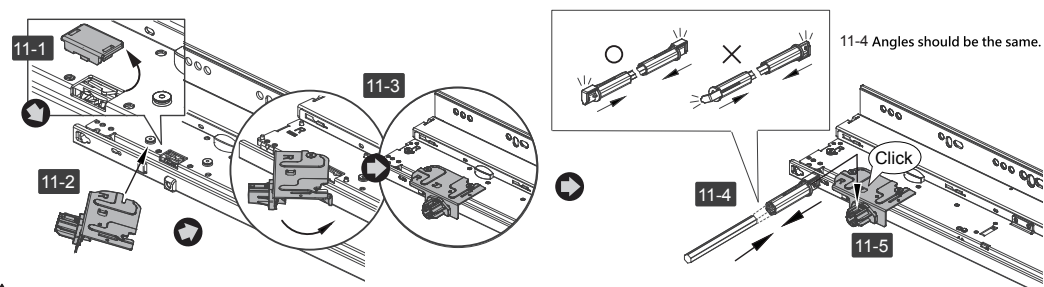


* The drawer bottom MUST align with the metal drawer sides before tightening the screws.

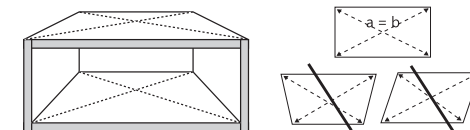
4 Drawer Back Installation



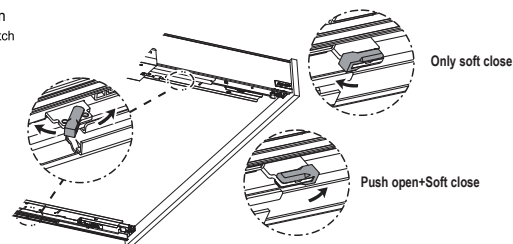
* Note :King Slide reserves the right to alter specifications of all the products without notice. The actual product may vary from the illustration if the entity is different from the illustration, please refer to the entity.

5 Front Fixing Bracket Installation**6 Engage The Front Fixing Bracket With Metal Drawer****8 8-ways adjustment illustration****9 Cover Cap Installation****10 Push-open Synchronization Rod Specification****11 Push-Open Synchronization Rod Installation****! Installation Notices****Before installation**

- Drawer does not move smoothly - Check the squareness of the drawer box

**After installation**

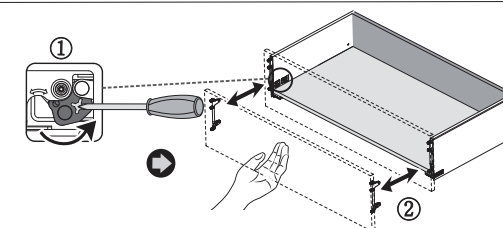
- Push Open Switch

**Caution**

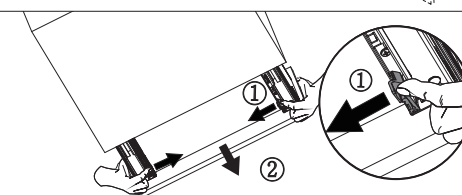
- Make sure two sides (Left & Right) are switched to the same mode.
- Push Open function will be disabled after switch to Soft Close. Please reserve space for pulling out.

- Turn the two cam screws to ON to remove drawer front panel.

* Hold the drawer front panel when releasing the front fixing bracket to avoid panel falling.

**Drawer removal**

Press the latch inward to release metal drawer from the slide.

**Transport**

- Remove the synchronization rod and the connector as shown below.



Installation Video



Drawer Size & Hole Positioning



Troubleshooting